

ONKYO.

Speaker System

D-145

Instruction Manual

Thank you for purchasing an Onkyo Speaker System. Please read this manual thoroughly before using it. Following the instructions in this manual will enable you to obtain optimum performance and listening enjoyment from your new Speaker System. Please retain this manual for future reference.

安装手册

感谢您购买一套日本安桥牌扬声器系统。在使用本扬声器系统之前，请认真阅读本手册。遵守本手册中的指示，您的新扬声器系统将具有最佳性能，您将会享受到声音的美妙。请保留本手册，以备将来查阅。

Before Using Your New Speakers

- The speaker cabinets are made out of wood and are therefore sensitive to extreme temperatures and humidity. Do not use them in locations subject to direct sunlight or in humid places, such as near an air conditioner, humidifier, bathroom, or kitchen.
- Place the speakers on sturdy, flat surfaces. Putting them on uneven or unstable surfaces where they may fall and cause damage will affect the sound quality.
- Do not keep water or other liquids close to the speakers. If a liquid is spilled over them, the woofer and tweeter inside may be damaged.
- Do not handle the speakers with wet or damp hands.

Precautions

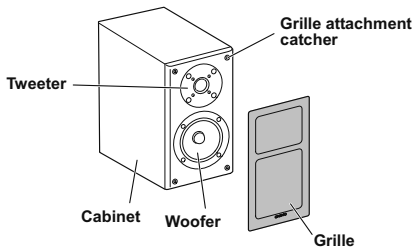
In catalogs and on packaging, the letter at the end of the product name indicates the color. Specifications and operation are the same regardless of the color.

The speakers can handle the specified input power when used for normal music reproduction. If they're fed any of the following signals, even if the input power is within the specified rating, excessive current may flow in the speaker coils, causing burning or wire breakage:

1. Interstation noise from an untuned FM radio.
2. Audio from a cassette that's being fast-forwarded.
3. High-pitched sounds generated by an oscillator, electronic musical instrument, and so on.
4. Amplifier oscillation
5. Special test tones from audio test CDs and so on.
6. Thumps and clicks caused by connecting or disconnecting audio cables (always turn off your amplifier before connecting or disconnecting cables).
7. Microphone feedback

The speakers contain powerful magnets. Do not put metal items, such as screwdrivers, close to the speakers, as they damage to the tweeter diaphragm.

Getting to Know the Speakers

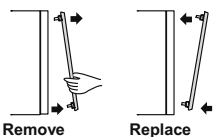


The two speakers are identical, so it doesn't matter which one you use on the left or right.

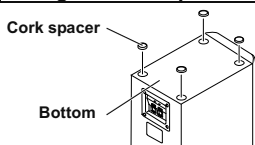
Using Close to a TV or Computer

TVs and computer monitors are magnetically sensitive devices and as such are likely to suffer from discoloration or picture distortion when conventional speakers are placed nearby. Note that discoloration can also be caused by a magnet or demagnetizing tool that's too close to your TV or monitor.

Removing the Grills

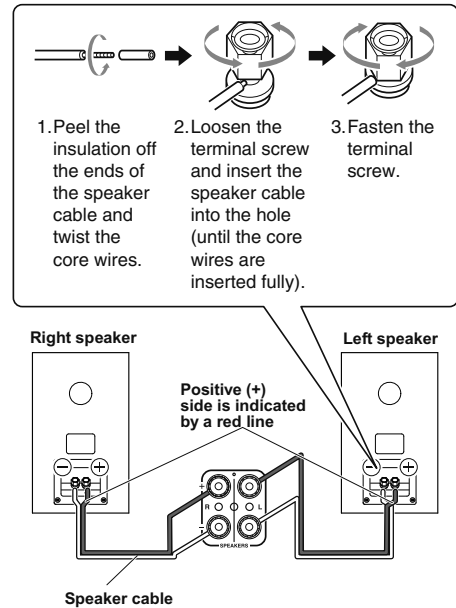


Using the Cork Spacers



Connection the Speakers

- Before connecting the speakers, disconnect your amplifier's power cord from the wall outlet and set its volume control to minimum.
- The speaker's rated impedance is 4 Ω. Make sure you connect an amplifier that is compatible with a 4 Ω impedance.
- Use the supplied speaker cables to connect the speakers to your amplifier as shown.



The type of speaker terminals used on the amplifier and their position depends on the model. Refer to the amplifier's instruction manual for details on connecting speakers to the amplifier.

- Make sure the speaker's positive (+) terminals are connected to the amplifier's positive (+) terminals, and the speaker's negative (-) terminals are connected to the amplifier's negative (-) terminals.
- Make sure that the positive (+) and negative (-) wires are not touching each other. If they are, a short circuit may occur, damaging your amplifier.



Care

To maintain the appearance of the speakers, you should periodically wipe them with a soft, dry cloth. Do not use abrasive cloths, thinners, alcohol, or other solvents that may damage the finish.

Specification

Type:	2-way bass reflex
Impedance:	4 Ω
Maximum input power:	80 W
Output sound pressure level:	85 dB/W/m
Frequency response:	55 Hz to 35 kHz
Crossover frequency:	3 kHz
Cabinet capacity:	7.5 l
Dimensions (W × H × D):	170 × 283 × 230 mm (incl. grille and projection)
Weight:	3.7 kg
Speakers:	Woofer: 12 cm OMF cone type Tweeter: 2.5 cm Soft Dome type
Terminal:	Screw-type speaker terminal
Grille:	Detachable
Accessories:	1.8 meter speaker cable × 2 Cork spacer × 8

* Specifications and features are subject to change without notice.

用前须知

- 该扬声器箱为木制，对高温潮湿环境极其敏感。因此，不要把扬声器箱放置在阳光直射的位置或潮湿的场所，例如：空调、加湿器、浴室或厨房附近。
- 把扬声器放置在坚固而平稳的地方，否则易导致其掉落、损坏，从而影响音质。
- 不要在扬声器附近存水或其它液体。如果液体溅到扬声器箱上，则会损坏其内部的高频扬声器及低频扬声器。
- 禁用湿手触摸扬声器。

注意事项

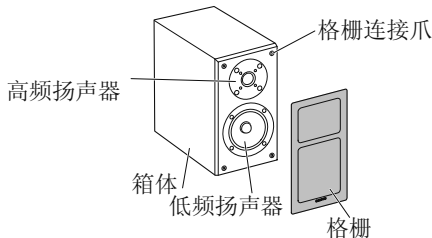
在产品目录中或包装上，产品名称结尾字母表示产品颜色。颜色不同不影响产品规格及操作。

当扬声器被用于正常的音乐重放时，能够处理额定的输入功率。如果向扬声器馈给下列任何信号，那么即使输入功率在规定的额定值范围内，也可能会有过大电流流入扬声器线圈内，造成燃烧或断线。

- 1) 未调谐的调频收音机发出的台间噪声。
- 2) 快进盒式磁带发出的声音。
- 3) 由振荡器、电子乐器等发出的高声。
- 4) 扩音器振荡。
- 5) 由音频测试 CD 等发出的特殊测试音。
- 6) 由连接或断开音频电缆引起的砰声或滴答声（总是要在连接或断开电缆之前关闭扩音器）。
- 7) 话筒反馈。

该扬声器内含强磁铁，不要把金属物品（例如螺丝刀）放在扬声器附近，以免损伤高频扬声器振动膜。

开始认识扬声器

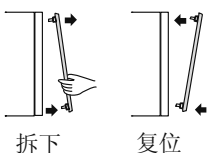


两个扬声器相同，因此，您在使用时左右两边放哪一个均可。

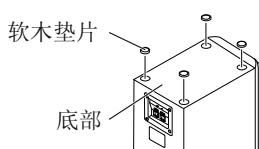
在电视电脑附近使用时的注意事项

电视和电脑显示器是磁敏感设备，因此当把传统扬声器放置其附近时，可能会引起变色或图像失真。注意，当磁铁或去磁工具离电视或电脑显示器过近时，也会引起变色。

拆下格栅

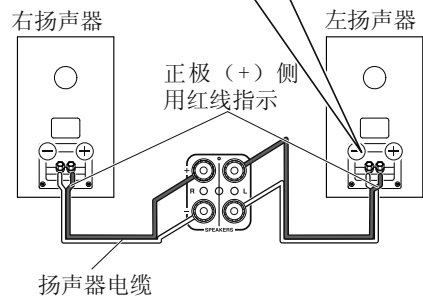
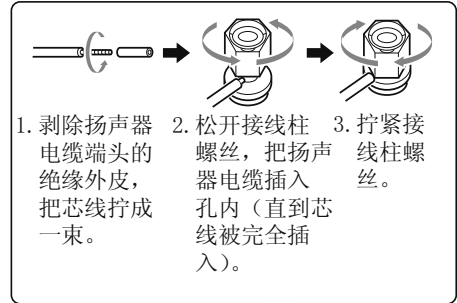


使用软木垫片



连接扬声器

- 在连接扬声器之前，切断扩音器电源线与壁挂电源插座的连接，把扩音器音量调节器调至最小。
- 该扬声器的额定阻抗为 4Ω ，请确保所连接的扩音器与 4Ω 阻抗相容。
- 使用所提供的扬声器电缆连接扬声器与扩音器，如下图所示。



扩音器所使用的扬声器端子类型及其位置取决于机型。关于扬声器与扩音器连接的细节，请查阅扩音器的安装手册。

- 确保扬声器的正极 (+) 端子与扩音器的正极 (+) 端子相连接，扬声器的负极 (-) 端子与扩音器的负极 (-) 端子相连接。
- 请确保正极 (+) 与负极 (-) 导线不相互接触，否则可能发生短路，损坏扩音器。



保养

为了维持扬声器的外观，应定期用干燥的软布擦拭它们。不要使用砂布、稀释剂、酒精或可能损坏面层的其它溶剂。

规格

型号:	双路低音反射式
阻抗:	4Ω
最大输入功率:	80 W
输出声压级别:	85 dB/W/m
响应频率:	55 Hz 到 35 kHz
分频频率:	3 kHz
箱容量:	7.5 l
尺寸(长×宽×高):	170 × 283 × 230 mm (包括格栅和突出部分)
重量:	3.7 kg
扬声器	低频扬声器: 12 厘米 OMF 圆锥形 高频扬声器: 2.5 厘米 软圆顶形
接线柱:	螺旋式扬声器接线柱
格栅:	可拆卸
附件:	1.8 米扬声器电缆×2 软木垫片×8

* 规格与功能可能发生更改，恕不另行通知。

ONKYO CORPORATION

Sales & Product Planning Div. : 2-1, Nisshin-cho, Neyagawa-shi, OSAKA 572-8540, JAPAN
Tel: 072-831-8023 Fax: 072-831-8163

ONKYO U.S.A. CORPORATION

18 Park Way, Upper Saddle River, N.J. 07458, U.S.A.
Tel: 800-229-1687, 201-785-2600 Fax: 201-785-2650 <http://www.us.onkyo.com/>

ONKYO EUROPE ELECTRONICS GmbH

Liegnitzerstrasse 6, 82194 Groebenzell, GERMANY
Tel: +49-8142-4401-0 Fax: +49-8142-4401-555 <http://www.eu.onkyo.com/>

ONKYO EUROPE ELECTRONICS GmbH (UK BRANCH)

The Coach House 81A High Street, Marlow, Buckinghamshire, SL7 1AB, UK
Tel: +44-(0)1628-473-350 Fax: +44-(0)1628-401-700

ONKYO CHINA LIMITED

Unit 1 & 12, 9/F, Ever Gain Plaza Tower 1, 88, Container Port Road, Kwai Chung,
N.T., Hong Kong. Tel: 852-2429-3118 Fax: 852-2428-9039
<http://www.ch.onkyo.com/>

W1006-1

SN 29400466
(C) Copyright 2010 ONKYO CORPORATION Japan. All rights reserved.

